

sfartsED ✨ players

in association with the Presidio Theatre present



Disney THE LITTLE  
MERMAID

© Disney

# SFartsED ✨ summer

It's the 29th creative year for San Francisco's best art summer camp for ages 6-14+

**June 10 - July 19, 2024**

Exploration (ages 6-9) @ Miraloma Elementary

Broadway Bound (ages 9-14+) @ Asawa SOTA

Art & Design (ages 10-14) @ Asawa SOTA

Fashion (ages 10-14) @ Asawa SOTA



#### New This Year!

**One-week workshops  
at Minnesota Street  
Project**

DIY Theater with  
SF Neo-Futurists!  
Where Art Meets Fashion!  
Puppet Movie Studio!

San Francisco Arts Education Project &  
The SFArtsED Players in association with  
The Presidio Theatre present

Disney's

# The Little Mermaid

Music by                      Lyrics by                      Book by  
Alan Menken      Howard Ashman & Glen Slater      Doug Wright

Based on the Hans Christian Andersen story and the Disney film  
produced by Howard Ashman & John Musker  
and written and directed by John Musker & Ron Clements

Originally produced by  
**Disney Theatrical Productions**

## **Artistic Staff**

SFArtsED Artistic Director: Emily Keeler  
Director: Danny Duncan  
Musical Director: Stefano Flavoni  
Assistant Director and Choreographer: Erin Gentry  
Dance Instructor & Choreographer: Laura Elaine Ellis  
Assistant Musical Director: Noah Bossert  
Additional Vocal Coaching: Ruby Day  
Set Design & Construction: Pete Belkin  
Projection Design: Stacey Ransom  
Lighting Design: Andrea Schwartz  
Costume Design: Tiersa Nureyev  
Wardrobe Mistress: Mallory McDaniel  
Costume Assistants: Marjorie Nureyev, Camila Rudolph,  
Clementine Prefot & Sky Krueger  
Stage Manager: Ariana Boostani  
Assistant Stage Manager: Brixton Plock  
Graphic Design: Julie Wertz

Orchestrations by Danny Troob  
Incidental Music & Vocal Arrangements by Michael Kosarin  
Dance Arrangements by David Chase

Disney's *The Little Mermaid* is presented through special arrangement with  
Music Theatre International (MTI).

All authorized performance materials are also supplied by MTI.  
423 West 55th Street, New York, NY 10019  
Phone: 212-541-4684 Fax: 212-397-4684  
[www.MTIShows.com](http://www.MTIShows.com)

**Any video and/or audio recording of this production is strictly prohibited.**

## CAST

Sailor, Sea Creature, Maid .....	Aida Samimi
Sailor, Sea Creature, Gull.....	Fiona Schobert
Sailor, Sea Creature, Gull.....	Helena Kirschner
Sailor, Sea Creature, Gull.....	Hollis Wofford
Sailor, Sea Creature, Maid .....	Jasmine Boyd
Sailor, Sea Creature, Gull.....	Katherine Wilder
Sailor, Sea Creature, Maid .....	Leelee Finn
Sailor, Sea Creature, Gull.....	Lila Ellis
Sailor, Sea Creature, Maid, Chef.....	Mable Johnson
Sailor, Sea Creature, Gull.....	Olina Amai
Sailor, Sea Creature, Maid, Chef.....	Oriana Jooss Moren
Sailor, Sea Creature, Maid, Chef.....	Shiuli Chambers
Aquata, Maid 1, Chef 1, Princess .....	Sylvie Reavill
Andrina, Maid 2, Chef 2, Princess .....	Maesie Kaan
Arista, Maid 3, Chef 3, Princess .....	Ashley Alvarado
Atina, Maid 4, Chef 4, Princess .....	Julia Torre
Adella, Maid, Chef 5, Princess .....	Andrea Gonzalez
Allana, Maid, Chef 6, Princess .....	Anna Forlin
Pilot, Windward/Leeward, Chef Louie .....	Shaan Swaminathan
Triton .....	Diego Vaznaugh- Sanchez
Flotsam.....	Alaji Sey
Jetsam .....	Owen Du
Scuttle.....	Savvy Ingle
Ursula .....	Joss Pearlman
Sebastian.....	Marco Salan
Prince Eric .....	Ian Nguyen
Grimsby .....	Mia Schleifer
Flounder .....	Belen Diwan
Ariel .....	Lily Normanly

---

## The 2023-24 SFArtsED Players Company



Ashley Alvarado	Lily Normanly
Olina Amai	Joss Pearlman
Jasmine Boyd	Sylvie Reavill
Shiuli Chambers	Marco Salan
Belen Diwan	Aida Samimi
Owen Du	Mia Schleifer
Lila Ellis	Fiona Schobert
Leelee Finn	Alaji Sey
Anna Forlin	Shaan Swaminathan
Andrea Gonzalez	Julia Torre
Savvy Ingle	Katherine Wilder
Mable Johnson	Hollis Wofford
Maesie Kaan	
Helena Kirschner	Guest Artist:
Oriana Jooss Moren	Diego Vaznaugh-Sanchez
Ian Nguyen	

## The Orchestra



Conductor / Keyboard  
**Stefano Flavoni**

Reeds  
**Terry Halvorson**

Oboe/English Horn  
**Alessandra Ramos**

Drums  
**Will Howald**

Keyboard 2  
**Andrew Chen**

## FROM ARTISTIC DIRECTOR EMILY KEELER

Welcome to The Players' 23rd season and the third year at the beautiful Presidio Theatre. We at SFArtsED are grateful to our co-producers here led by the visionary Peggy Haas. It was her concept with her team of engineers, artists, and administrators led by Robert Martin, to turn this former military movie and vaudeville-style house into a state-of-the-art theater with programming which celebrates the work of the city's diverse artists as a gift to the community. We are honored to be on their roster.

We are delighted to present this musical, Disney's *The Little Mermaid*, with its magical story of a young girl's search for her authentic home. It was based both on the Hans Christian Andersen story and Disney's 1989 animated film. The movie had the wonderful songs by Alan Menken and Howard Ashman and was an instant smash with families in the theater and video rental. It could be argued that the huge resurgence of interest in the musical theater form, both in younger audiences and performers, began with this and other animated musical movies which cleaved to the old Broadway musical formulas.

I want to thank our brilliant, dedicated staff of Players' mentors, who share their passion and insights regarding music, dance, and acting with our company. Players is also so lucky with the designers who contribute their artistry for the magical costumes, sets, props, projections, and lights.

SFArtsED absolutely depends, for this and all our programs, on the small but mighty staff. I want to give a huge shout out to Kathleen Moore, our Administrative Director for her 30 years of detailed and heartfelt work. A huge thank you also to our other two senior staff members: Executive Director Chad Jones and Program Director Mia Waller.

In addition to our staff, there is our volunteer staff, our hard-working Board of Directors led by our Designer/President, Julie Wertz, and so many others who give of time and resources to ensure that our work continues.

I also acknowledge the devoted families of the performers, cheering them on, volunteering to help in various ways and helping make possible the significant commitment their children make for months of study and rehearsal.

For the first time in our history our company has a guest alumni performer, Diego Vaznaugh-Sanchez. We thank him for joining us and enriching *The Little Mermaid*.

The Players are supported by the generous individual contributions to our Producers Circle, by the Performing Arts Endowment created by Richard and Sharonjean Leeds, and by support from the Crankstart and Gunther Foundations, the Dawn Redwoods Trust, and San Francisco Grants for the Arts. We are grateful to these supporters for making sure we can raise the curtain on these shows and share the work of these artists, young and seasoned, with the city.

This winter, SFArtsED and the Players lost two great friends.

The first was Lucene Thomason who, with her son, former SFArtsED mentor, and current Board member, Cole Thomason-Redus, have for years raised and donated funds for scholarships for both the Players and our summer Broadway Bound programs through their charming cabarets featuring Cole, artistically decorated sweets, and sparkling wine. Lucene also was an enthusiastic supporter of SFArtsED's visual arts programs, attending exhibitions and auctions and filling her house with art from our mentors and students. A fund supporting the Producers Circle has been set up in her memory.

The second was Diane Price. She was a grandmother to three Players alumni and faithfully attended all the performances of our company whether her family was represented on stage or not and often served as a Players performance coach or advisor. She was a noted performer in San Francisco, starring in many productions with The San Francisco Opera Ring and became a significant, beloved director, producer, and educator to scores of young performers in the art of musical theater through the company she began in 1984, Young People's Teen Musical Theater Company. She also directed many musicals at both Lowell and the Ruth Asawa San Francisco School of the Arts.

These performances of *The Little Mermaid* are dedicated to the memory of both of these magnificent women.



## SFArtsED ARTIST BIOS

### **Emily Keeler – Artistic Director**

Ms. Keeler has worked primarily in the Bay Area as a dancer, choreographer, educator, and advocate since 1975. She was both a dancer and resident choreographer for the San Francisco Moving Company for eight years and a principal dancer for Cliff Keuter's New Dance Company and Joe Goode Performance Group. She has choreographed for numerous companies, both modern and ballet, including Joffrey Dancers, Oakland Ballet, and Dance Art and has been a movement consultant and choreographer for American Conservatory Theater, Magic Theater, George Coates Performance Works, Pickle Family Circus, Make\*a\*Circus, Z Space, the Dance Generators, and Choral Chameleon. She has been a resident artist and lecturer at DeAnza College, Mills College, San Francisco State, NYU Musical Theater Graduate Writing Program, and at the Ruth Asawa San Francisco School of the Arts. She is the recipient of four National Endowment for the Arts Choreographic Fellowships and has been a judge at both the Colorado Dance Festival and the American College Dance Festival. Ms Keeler served for three years as the dance member of the San Francisco Arts Commission. In 2016 she was awarded an MFA from San Francisco State in Creative Writing. She has been the Artistic Director of SFArtsED since 1985, a collaborating artist and producer for the Players since 2001, and one of the curators at SFArtsED's gallery at Minnesota Street Project since 2016. Emily is workshoping with actor Andrea Snow, director Jael Weisman and composer Randy Craig, a theatrical version of her second book, *Dark Days and a Black Dog*. She respectfully thanks her teachers Roberta Humphrey, John Wilson, Aaron Osborne, Margaret Jenkins, Elina Mooney, Alonzo King, Yehuda Maor, Kahz Zamuda, John Lasky, Cooley Windsor, and Helena Birecki.

### **Danny Duncan – Director**

Mr. Duncan is a native San Franciscan who has worked as a theater artist in the Bay Area most of his life. As founder and Artistic Director of Duncan & Company, he toured the West Coast for seven years. Mr. Duncan's writing career began in 1969 with *Uhuru*, which appeared Off Broadway in New York at the City Center Theatre. Since then, he has authored and produced eight original musicals including *Billie's Song*, winner of six Bay Area Critic Awards including Best Musical and *Go Down Garvey* produced by TheatreWorks. Mr. Duncan has written the librettos and lyrics for eight of SFArtsED Events and three original musicals for the SFArtsED Players: *Invisible Princess*, *One*, and *Pinocchio Jones*. He is also the recipient of the Bay Area Critics Circle Award for his choreography for TheatreWorks' production of *RAISIN* as well as the Dean Goodman Choice Award for outstanding achievement in theatre. For five years he served as Artistic Director for the Mayor's Summer Youth Program in Bayview Hunter's Point and for ten years with United Projects, an arts organization that trained young people in the performing arts. Mr. Duncan has had a long association with the Ruth Asawa San Francisco School of the Arts as the director of their school-wide musicals, has taught theater at the American Conservatory Theater, and was on the faculty of the Oakland School of the Arts as theater teacher and director of their musicals. He has worked with SFArtsED in their school residencies, Broadway Bound camps, and as the director of all but two of the Players's productions since 2001. He is working with San Francisco Bay Area Theatre Company on a new musical: *Every Saturday Night* about the world of Western Addition jazz clubs when he was a child. The show will debut in 2025.

### **Stefano Flavoni – Musical Director**

Mr. Flavoni is an American conductor currently serving as Assistant Conductor (Musikalische Assistenz) of Staatsoper Hamburg and the Philharmonisches Staatsorchester Hamburg. He also serves the same role this season with the Bayerische Staatsoper, leading the rehearsal process for a new production of Ligeti's *Le Grand Macabre*. He also re-



turns as Associate Conductor for his fifth season with the Lakes Area Music Festival. He has worked as a Cover and Assistant Conductor for a variety of American ensembles, including the New York Philharmonic, San Francisco Symphony, Baltimore Symphony, and American Modern Opera Company. Mr. Flavoni has been described by harpsichordist Davitt Moroney as someone who “digests all new sounds he has heard and turns them into something different, something that is uniquely Stefano Flavoni and is stamped by a kind of hallmark of musical intensity.” He was recently selected by the Solti Foundation as a 2023 recipient of the prestigious career advancement award for young conductors. He has been mentored by several luminaries of classical music, including Kent Nagano, Manfred Honeck, and James Levine, and has assisted such notable conductors as Gustavo Dudamel, Herbert Blomstedt, and Michael Tilson Thomas. Upcoming productions with Staatsoper Hamburg include *Tristan und Isolde*, *Elektra*, *Ariadne auf Naxos*, *Boris Godunov*, *Les contes d'Hoffmann*, *Der fliegende Holländer*, and several world premieres.

### **Erin Gentry – Assistant Director / Choreographer**

Ms. Gentry has been a choreographer with SFArtsED Players and Broadway Bound summer camp since graduating from the University of San Francisco in 2010. She has also directed and choreographed for Ruth Asawa San Francisco School of the Arts, Jewish Community High School, and Throckmorton Theater. In the Players 2018-2019 season, she had the privilege of directing the Players production of *Building Broadway*. Ms. Gentry is immensely proud of the hard work of each of these young performers and the entire artistic staff for their valuable contributions and collaboration.

### **Laura Elaine Ellis – Dance Instructor & Choreographer**

Ms. Ellis has served 30 years on faculty for the Theatre & Dance Dept., Cal State University, East Bay and for the Arts Dept at the Athenian School. For CSUEB, she co-directed and co-choreographed, with colleague Kimiko Guthrie, *A Chorus Line* (2003) which garnered critical praise and was the catalyst for CSUEB's Musical Theater program. In addition to her work on numerous SFArtsED productions and SFArtsED/SFBATCO's *Ragtime* (2017), *West Side Story* (2019), *I, Too, Sing America: The Next Gen* (2023) and SFBATCO's *Sign My Name to Freedom* (2021 & 2023), she has staged productions for Open Opera, Festival Opera, George Coates Performance Group, Douglass Morrison Theater, Theatre Rhinoceros, and Shotgun Players. In 2022, she shared an artistic residency and collaboration with Tiersa Nureyev, at MSP/ SFArtsED Gallery on the premiere of a site-specific work, *ruminations. [re] visited.*, featuring Dimensions Dance Theater. She performs and tours with Dimensions Dance Theater and Flyaway Productions and has danced in works for choreographers Emily Keeler, Donald McKayle, Garth Fagan, Deborah Vaughan, Joan Lazarus, Anne Bluethenthal, Kim Epifano, and Robert Moses. She is co-founder of the award-winning Black Choreographers Festival: Here & Now. She delights in the fact that her first Bay Area teaching experience was with SFArtsED, in 1990.

### **Noah Bossert - Assistant Musical Director**

Mr. Bossert is a passionate music educator, pianist, and vocal coach hailing from Madison, Wisconsin. He graduated from the University of Wisconsin Madison with an undergraduate degree in Music Education and graduate degree in Education Policy and Analysis. Focusing on access to music education-for-all is his top priority as an educator and advocate. He started his teaching career as a high school choir and general music teacher in Milwaukee, Wisconsin. There, he provided musical opportunities to all students through accompanying and arranging for the choirs, leading hip-hop cyphers in the general music classroom, and music directing/keyboard conducting multiple different shows produced by the high school theater company (*Tuck Everlasting*, *Fly by Night*, and *High School Musical the Musical*). Upon moving to the Bay Area, Mr. Bossert began performing all-request shows at dueling piano clubs such as Johnny Foley's, as well as solo piano bars such as

Martuni's. As a musical director, he continues to direct shows at San Francisco University High School (*Merrily We Roll Along*) while teaching vocal arts and songwriting as a music faculty member, and works as with local theaters such as SFBATCO (*I, Too, Sing America*) and 142 Throckmorton Theater (*A Chorus Line, Fiddler on the Roof*).

### **Tiersa Nureyev – Costume Designer**

Ms. Nureyev creates costumes for film, musical theater, dance, and performance art and is a visual artist/maker that works across the disciplines of craft and design. She is the co-founder of the collaborative design studio Stella Fluorescent, which creates sustainably designed fashion, textiles and jewelry. Ms. Nureyev is an active teaching artist (via SFArtsED) and leads summer programs with youth that explore the intersection between fashion and art. This is Tiersa's tenth year costuming for the Players. [tiersanureyev.com](http://tiersanureyev.com)

### **Pete Belkin – Set Designer**

By trade, Mr. Belkin is a visual artist, digital media engineer, and exhibitions producer. Born in Moscow, Russia, Pete has worked with numerous museums and nonprofit arts institutions in the San Francisco Bay Area and internationally and can often be found interviewing artists, producing public programs, or curating exhibitions. Previously, Pete worked with KADIST Art Foundation, Oakland Museum of California, and Berkeley Art Museum & Pacific Film. He holds an MFA from San Francisco Art Institute and a BFA from California College of the Arts. When not in the studio or editing video in front of the computer, he can be spotted going on hikes with his daughter or creating sculptural installations in the surrounding landscape. Pete joined the SFArtsED staff in 2020 and serves as Curatorial Associate and Digital Media Producer.

### **Stacey Ransom – Projection Designer**

Ms. Ransom, a production designer, prop maker, and digital artist. With the Players, she has designed *Building Broadway, Matilda, Once Upon a Mattress, Annie* and *Newsies*. She helped launch the SFArtsED Summer Design for Theater program as well as the Players Backstage program. Ms. Ransom is also half of the still and motion creative team Ransom & Mitchell whose work combines cinematic lighting with distinctive scenery and digital artistry to create what cannot exist. Their fine art is shown internationally in galleries from Tokyo, Berlin, Melbourne, New York, and Los Angeles. Commercial art clients include Grey, Young & Rubicam, DDB, Virgin Records, and The Oakland Museum of California. They have been featured in Juxtapoz, Hi-Fructose, HeyHeyHey, and Beautiful Bizarre.

### **Andrea Schwartz - Lighting Designer**

Andrea Schwartz is thrilled to be designing the lights for SF ArtsED for the third year. She believes that lights bring the story to life. They help convey the emotion, time and place. More than that they give the show whether it is theatre or dance depth. They create a space for both the performers and the audience. They give our brains the first idea of what it is we should be experiencing. Some of the most amazing looks have drawn the audience into tears or terrified them enough to jump from their seats. Lights shape your opinion of the characters on the stage and in a sense are a character all to themselves. Andrea loves sitting in dark theaters and creating lightscapes. Some of her favorite shows include: *Almost Maine* (B8 Theatre and San Leandro High School); *A Midsummers Night's Dream* (Meher Schools, San Leandro High and Moreau Catholic High School); *Jubilee* (B8 Theatre); *In the Heights* (Throckmorton Theatre); *Cinderella* (Curtain Call Performing Arts); and *Once On this Island* (Curtain Call Performing Arts and Moreau Catholic High School).

### **Ariana Boostani – Stage Manager**

Ms. Boostani is a versatile professional with expertise in dance, music, education, and audio engineering. Holding a B.S. in Environmental Chemistry and a Minor in Theatre & Dance from UC Davis, Ariana serves as an instructor at Women's Audio Mission, specializing in teaching audio skills to a diverse group of students. They have contributed to productions with renowned organizations such as Flyaway Productions, Oasis SF, and El Rio; while also creating music for and performing with Post Ballet. Ariana's multidisciplinary skills and dedication to fostering inclusivity and creativity underscore their professional achievements.

### **Diego Vaznaugh-Sanchez – Guest Artist**

Mr. Vaznaugh-Sanchez is a fifth-generation San Franciscan with a multicultural background, a sophomore at the Urban High School, and a Players Alumni. He was a member of the SFArtsED Players from 2019 to 2022 where he developed an interest in singing and began voice training with Sergey Khalikulov. As a Player, he performed in *Matilda*, *Once Upon a Mattress* (during the COVID-19 pandemic), and *Annie*. After graduating from Players he starred as Emmet Forrest in the musical *Legally Blonde* in 2022 and as Professor Bhaer/Rodrigo in *Little Women* in 2023. Both musicals were produced by the Young People's Teen Musical Theater Company and directed by Nicola Bosco-Alvarez. In the 2023-2024 school year, he performed in *Pride and Prejudice* and *Alice by Heart* at Urban High School. Diego helped train younger artists as an intern at the SFArtsED Broadway Bound camp in the summer of 2023 and is very excited to continue working with the SFArtsED family.

### **Alan Menken – Composer**

Theater: *God Bless You Mr Rosewater*, *Little Shop Of Horrors*, *Real Life Funnies*, *Atina: Evil Queen Of The Galaxy*, *Kicks*, *The Apprenticeship Of Duddy Kravitz*, *Beauty And The Beast*, *A Christmas Carol*, *Weird Romance*, *King David*, *Der Glöckner Von Notre Dame*, *The Little Mermaid*, *Sister Act*, *Leap Of Faith*, *Aladdin and Newsies*. Film: *Little Shop Of Horrors*, *The Little Mermaid*, *Beauty And The Beast*, *Newsies*, *Aladdin*, *Pocahontas*, *The Hunchback Of Notre Dame*, *Hercules*, *Life With Mikey*, *Lincoln*, *Home On The Range*, *Noel*, *Enchanted*, *Shaggy Dog*, *Tangled* and *Mirror Mirror*. Songs: *Rocky V*, *Home Alone 2* and *Captain America*. Awards: 8 Oscars (19 nominations), 11 Grammys (including Song of the Year), 7 Golden Globes, Tony® (plus 4 nominations), Drama Desk, Outer Critics Circle, New York Drama Critics, Olivier and London's Evening Standard Award, Drama League. Honors: Songwriter's Hall of Fame, Doctorates from New York University and University of North Carolina School of the Arts.

### **Howard Ashman – Lyricist**

Best known as a pivotal creative mind behind the renaissance of Disney animation and his work on *The Little Mermaid*, *Aladdin* and *Beauty and the Beast* (which is dedicated to, "Our friend, Howard Ashman, who gave a Mermaid her voice and a Beast his soul...") Ashman's first love was theater. Ashman was a founder of off Broadway's renowned WPA Theater, where he conceived, wrote and directed *God Bless You, Mr. Rosewater*, as well as the classic musical, *Little Shop of Horrors* (both music by Alan Menken). In 1986, he wrote and directed the Broadway musical *Smile* (music by Marvin Hamlisch). Lamented as a lost treasure of the 1980's theater scene, *Smile* remains popular on High School and College campuses throughout the country. Howard Ashman died in 1991 from complications of AIDS. For more information, please visit [howardashman.com](http://howardashman.com).

### **Glenn Slater – Lyricist**

Mr. Slater co-created Disney's 2010 worldwide smash *Tangled* (2011 Grammy Winner, 2010 Oscar and Golden Globe nominee), as well as the Broadway and international hit

musicals *Sister Act* (2011 Tony nominee - Best Score) and *The Little Mermaid* (2008 Tony nominee - Best Score, Grammy nominee - Best Cast Album), and, most recently *School of Rock* (2015). With longtime collaborator Alan Menken, he is Executive Producer and Lyricist for the ABC-TV musical comedy series *Galavant*, and has also written songs for the Disney animated film *Home On The Range* (2004) and the Broadway musical *Leap of Faith* (Tony nominee - Best Musical, 2012). In the West End, Glenn provided both book and lyrics for Andrew Lloyd Webber's *Love Never Dies* (2010 Olivier nominee - Best Musical), the sequel to *Phantom of the Opera*. Glenn is the recipient of the prestigious Kleban Award for Lyrics, the ASCAP/Richard Rogers New Horizons Award, and the Jonathan Larson Award. He is an alumnus of the BMI Musical Theatre Workshop, and a member of both ASCAP and the Dramatists' Guild.

### **Doug Wright – Book**

GLAAD Media Award, an Outer Critics Circle Award, a Drama League Award and a Lucille Lortel Award for *I Am My Own Wife*. His screen adaptation of *Quills* was named Best Picture by the National Board of Review and nominated for three Academy Awards. Doug was cited by the American Academy of Arts and Letters and awarded the Tolerance Prize from the Kulturforum Europa. Currently, he serves on the board of the New York Theatre Workshop and serves as Secretary on the Dramatists Guild Council. Works include: *Interrogating the Nude* (1988), *Quills* (1995), *Unwrap Your Candy* (2001), *I Am My Own Wife* (2003), *Grey Gardens* (book) (2006), *The Little Mermaid* (book) (2007), *The Pavilion* (2009).



**Lily,  
Have fun “under  
the sea.”  
Break a leg (fin?!)  
Love,  
Amai &  
Grampy Mark**

THE LAW OFFICES  
*of*  
R. Michael Lieberman

Support, salute, and celebrate the  
San Francisco Arts Education Project  
and congratulate the extraordinary Players  
on their performance.

1398 POST STREET, SAN FRANCISCO • 415.929.3197

**Life is unscripted**



**Be Who You Are**

**We Love you Marco!**



**CONGRATULATIONS ON YOUR FIRST  
THEATER PRODUCTION.  
WE ARE SO PROUD OF YOU!  
LOVE MOM, DAD & MAX**

# Dodge & Cox®



**Congratulations,  
Katherine!  
We are so proud of your  
hard work and dedication!**



# Many Thanks to our Generous 2023-2024 Donors

## DONOR CIRCLE 2023-2024

Anonymous

Mr. Laurence Adelman &  
Ms. Andrea Snow•  
Ms. Amy Andersen  
Ms. Kay Anderson•  
Ms. Sigrid Anderson-Kwun &  
Mr. Michael S. Kwun  
Mr. David Auerbach•  
Ms. Dhvani Barot  
Ms. Margaret Barr•  
Ms. Meryl Bennan & Mr. James Bennan  
Ms. Deborah Bishop &  
Mr. Michael Lieberman  
Ms. Helena Birecki•  
Mr. Frank Born•  
Ms. Livia Blankman &  
Mr. Christopher Bigelow  
Ms. Rena G. Bransten  
Mr. William Brown  
Ms. Rebecca Burad•  
Ms. Ava Burnell  
Mr. Daniel S. Butterfield  
Ms. Liz Cardone & Mr. Lloyd Cardone  
Ms. Gayle Chan & Dr. William Chan  
Ms. Bessie Chin•  
Ms. Robin Clark &  
Mr. Steve Menasche  
Ms. Gracie Coates•  
Mr. David Coffman•  
Ms. Helen Cohen &  
Mr. Mark Lipman  
Ms. Liz Cohen•  
Mr. Theodore Cohen☞  
Mr. Daniel Coleman☞  
Ms. Dorian Cox ☞  
Ms. Geraldine Dal Porto Travins•  
Ms. Jessica M. Daul☞  
Mr. Mark Denton & Mr. Joseph Sun•  
Ms. Leela de Souza Bransten &  
Mr. Peter Bransten  
Ms. Michele deVogelaere  
Ms. Amy Diediker☞  
Ms. Barbara R. Dobrinen &  
Mr. David Dobrinen☞  
Ms. Catherine Doyle☞  
Ms. Nancy Ewart☞  
Mr. Joseph Fanvu☞  
Ms. Carol Toby Flax

Ms. Diana Fuller  
Ms. Heidi Georgeson &  
Mr. Paul Georgeson  
Ms. Anne Germanacos / Firehouse Press•  
Ms. Naomi Goodman☞  
Ms. Mara Gottschling☞  
Ms. Linda Harold•  
Ms. Cathleen Guthrie☞  
Ms. Merrilee F. Harris  
Ms. Laura Heffron•  
Ms. Janet M. Heikel & Mr. Gary E. Heikel☞  
Ms. Ann Henry  
Ms. Valerie Hersey•  
Ms. Sue Horst & Mr. Blair Horst  
Ms. Margaret Jenkins & Mr. Al Wax  
Ms. Janet M. Johnson &  
Mr. Robert Johnson  
Dr. Jaculine C. Jones  
Mr. D. Ronald Jones  
Ms. Elizabeth Jardina & Mr. Brian Stoler  
Ms. Barbara Kaplan•  
Ms. Rebecca Katz•  
Mr. John F. Kelleher☞  
Mr. William Klingelhoffer☞  
Ms. Bernadette Kim  
Mr. Walter Knoepfel  
Ms. Ada Kriegman  
Ms. Annette Lai  
Ms. Cecelia Lau & Mr. Abhishek Doshi  
Ms. Caroline Leeb  
Ms. Robin Leiter  
Ms. Donna Lim  
Ms. Deborah Lindberg☞  
Ms. Helen Loeser & Mr. David Teitel•  
Ms. Sarah Lombardo  
Mr. Reuben Mann☞  
Ms. Lillian Marking &  
Mr. Mark Lelivelt  
Ms. Angela Martin☞  
Ms. Catherine Matlack☞  
Ms. Berta McDonnell &  
Mr. Mark McDonnell•  
Ms. Joanne McGlothlin☞  
Ms. Irene Mecchi  
Dr. Janet Mohle-Boetani &  
Mr. Mark Manasse  
Mr. Peter Morrow☞  
Ms. Nancy Murphy & Mr. Chuck Murphy☞  
Mr. Tim Murray & Mr. Tom Murphy  
Ms. Murrey Nelson☞

Ms. Nancy Ng  
 Mr. Justin Nishioka☯  
 Ms. Lucy O'Regan☯  
 Ms. Samantha Ozuna  
 Ms. Anne Pagenkopf☯  
 Mr. Gerrod Pagenkopf☯  
 Ms. Perri Paniagua☯  
 Ms. Barbara Lynn Pape☯  
 Ms. Laura Paradis  
 Ms. Michaela Peters•  
 Mr. Patrick Pollard☯  
 Ms. Glenna Pop-Stefanov &  
 Mr. Bruno Pop-Stefanov•  
 Ms. Belinda Presser  
 Mr. Richard Pyne☯  
 Mr. Ram Raghunathan  
 Mr. Jeff Raz•  
 Mr. George Reed☯  
 Mr. William Supple Reed  
 Ms. Donna Revelli☯  
 Ms. Marcia Ruben  
 Ms. Jessica Ruiz☯  
 Mr. John Sanger  
 Ms. Sue Saracco & Mr. Gino Saracco  
 Ms. Linda Scheiffler-Marks☯  
 Ms. Margot Schiff-Levin•  
 Ms. Pamela Ann Scrutton  
 Ms. Pamela Servatius•  
 Ms. Sharon Shepherd &  
 Mr. Laird Rodet•  
 Mr. Gary Silberstein•  
 Mr. Don Simonson, Marcia Simonson,  
 Lily Simonson & Sara Simonson•  
 Ms. Patricia A. Spencer &  
 Dr. E. Martin Spencer☯  
 Ms. Jane Spray•  
 Mr. Raymond Stata  
 Mr. Mark St. Cyr•  
 Ms. Susan Straghalis & Ms. Beth Ogilvie  
 Ms. Nancy Sutterley  
 Ms. Laura Swaminathan &  
 Mr. Anand Swaminathan•  
 Ms. Janet Mason Tarlov &  
 Mr. Richard Tarlov  
 Mrs. Elizabeth Terplan &  
 Dr. Martin Terplan☯  
 Ms. Kris Twining  
 Ms. Carolyn F. Vocker☯  
 Ms. Jo Waller & Mr. Gary Waller  
 Ms. Patricia Walsh☯  
 Ms. Nancy Wassenberg &  
 Mr. Roger Wassenberg☯  
 Mr. Andrew Weinstein

Dr. Kathleen Welsh & Dr. Bill Plautz  
 Ms. Ann Wettrich & Mr. John Roloff•  
 Ms. Christina Wong & Mr. Randy Pon  
 Mr. John Won  
 Ms. Bernadine Wu & Mr. David Wu☯  
 Ms. Lisa Yamauchi & Mr. Michael O'Brien  
 Dr. Sandra D. Yuen & Dr. Lawrence Shore  
 Ms. Betty Zlatchin &  
 Mr. Carl Zlatchin

• In memory of Stephen Goldstine  
 ☯ In memory of Lucene Thomason

### PRODUCERS CIRCLE

Ms. Julie Ann Ballard  
 Ms. Barbara Bock &  
 Mr. Mark Barmore  
 Ms. Margaret E. Haas  
 Mr. Rodney Earl Jackson Jr.  
 Ms. Sharonjean Leeds &  
 Dr. Richard Leeds  
 Mr. Adam Maggio  
 Mr. Steve Newman  
 Ms. Nancy Quinn &  
 Mr. Thomas Driscoll  
 Mr. Jeff Raz  
 Mr. Roger Schachtel  
 Ms. Arlene Stucky  
 Ms. Lucene Thomason

### FOUNDATION & GOVERNMENT SUPPORT

California Arts Council  
 Bernard Osher Foundation  
 Crankstart Foundation  
 Dawn Redwoods Trust  
 Eva Gunther Foundation  
 Inner Sunset Community Advocates  
 James Irvine Foundation  
 Leader Family Fund  
 Alexander M. & June L. Maisin Foundation  
 McMurtry Family Foundation  
 McNabb Foundation  
 San Francisco Grants for the Arts  
 Morris Stulsaft Foundation



**DONATE**

Use this QR code to  
 make a gift to SFArtsED





Amazing and Fantastic  
Katherine!  
I am so very proud of you.  
Love, Aba



An old-school merchant de vin specializing  
in limited production wines from France & Italy,  
**and a proud supporter of SFArtsED!**

DIGWINESF.COM • 415.810.2202



CONGRATULATIONS PLAYERS!

•JOSS, WE ARE SO VERY PROUD OF YOU•

Your Forever Fans,  
M, D, Lael & Bean

Proud to support the  
SFArtsED Players in their  
23rd season  
and applaud their triumph with  
*The Little Mermaid.*

**Todd Stein** |



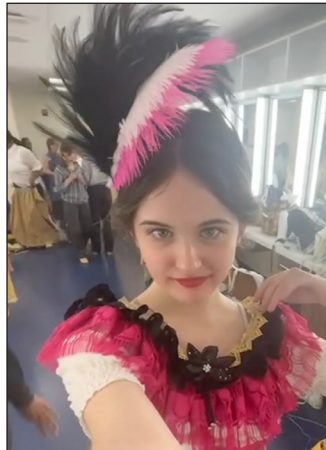
*Licensed Insurance Agent Specializing in Long-Term Care Solutions*

415.861.5088 [todd.stein@acsiapartners.com](mailto:todd.stein@acsiapartners.com)

CONGRATULATIONS TO  
LILY AND TO ALL THE  
SFARTSED PLAYERS  
FROM EVERYONE AT



LAW OFFICES OF  
**CAVIN & MARKS**





**Swami 3 proudly supports and thanks SFArtsED for the incredible contribution to arts education in San Francisco**

# **SURFACEDESIGN INC**

**An award-winning landscape architecture and urban design firm based in San Francisco—and a stalwart supporter of the mission of SFArtsED.**

SDISF.com • 415.621.5522  
Pier 33 North, The Embarcadero, San Francisco

# CONGRATS LILY & IAN!



It's been an *amazing* season!



Friends  
since TK



Final Players  
Performance



Highschool  
bound!



## BRAVO!!!

Cheers to your hard  
work and making it to  
the finish line  
together!  
*Keep on crushing it!*



*Congratulations*  
to  
*Leelee*

**& all of the Players!**

*Break a Leg!*

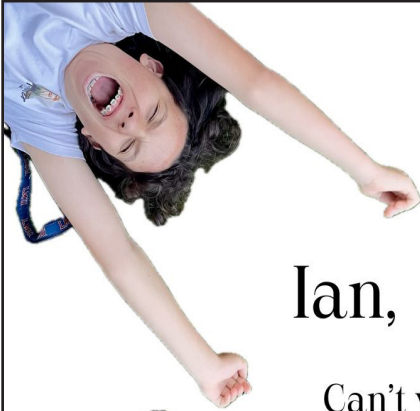
**—The Finn Family**

Congratulations  
Maesie on another  
incredible, what do  
you call it....  
Performance!  
Your commitment  
and passion for the  
theatre is, what's  
that word again....  
Inspiring!

We love you!!  
M, D & C



CONGRATULATIONS, LILA! WE ARE SO PROUD! LOVE, MOM AND DAD



Ian,

Can't wait to see you transform from a lemon to the one and only Prince Eric! Your kingdom of supporters is ready to cheer you on, and we're excited to be part of your world!



Break a fin— I mean, leg!

-The cousins







*Many thanks to the following for their donations to the SFArtsED Players Silent Auction fundraiser.*

42nd Street Moon  
American Conservatory Theater  
Bay Football Club  
Berkeley Repertory Theatre  
BroadwaySF  
Butter&  
Captured Moon Photography  
Catharine Clark Gallery / EXiT  
Chanticleer  
City Arts & Lectures  
DIG Wines  
*Dear San Francisco / Club Fugazi*  
Golden State Warriors  
Joe Goode Performance Group  
MAC (Modern Appealing Clothing)  
The Magic Patio  
Métier  
Olga Trofymets Photography  
Oregon Shakespeare Festival  
Piccino  
Quince  
Recchuiti Chocolate  
Seven Sundays Studio  
SFArtsED Summer  
San Francisco Bay Area Theatre Company  
San Francisco Giants  
San Francisco Opera  
SFMOMA  
Ziva Nasser

*(as of press time 3/28/24)*

# Family Messages

**Congratulations Shiuli!!!**

**We love watching you perform dance, music and theater!  
We love you,  
Your Family**

**Big thanks to the entire cast, crew, and creative team for  
all your hard work. Bravo! Special shout out to Grimsby:  
Congrats on your first musical with SFArtsED Players!  
Proud of you.**

**Mama, Abba, Paola, Mia, Freddie, and Matilda**

**From the first  
show and forever  
afterwards, we are  
so proud of you  
Sylvie.  
Love,  
Mom, Dad &  
Franklin**



## **SFArtsED Mission Statement**

The San Francisco Arts Education Project provides children with participatory experiences in the visual and performing arts under the mentorship of practicing artists. Such collaborations empower students with creative skills that will serve them in all aspects of their lives, while offering artists new outlets for expression and opportunities to engage with the wider community.

## **SFArtsED Board of Directors**

President Julie Wertz, Amy Andersen, Meryl Bennan,  
Deborah Bishop, Neel Doppalapudi, Susan Friedman, William Hack,  
Martha Mangold, Kaelin McGill, Nell Mei, Janet Mohle-Boetani, Samantha  
Ozuna,  
Erik Parra, Janet Mason Tarlov, Cole Thomason-Redus, Richard Vaznaugh,  
Sylvia Faison Wilkerson, John Won

## **SFArtsED Staff**

Chad Jones, Executive Director; Emily Keeler, Artistic Director;  
Mia Waller, Program Director; Kathleen Moore, Administrative Coordinator &  
SFArtsED Summer Registrar; Pete Belkin, Curatorial Associate & Digital Media  
Producer; Laura Bloch, Business & Accounts Manager; Laird Rodet, Develop-  
ment Consultant; Susan Tramontana, Glen Park After-School Site Coordinator

## **Special Thanks**

Peggy Haas	The Family of Lucene Thomason
Robert Martin	Julie Wertz, Deborah Bishop &
Patty Ann Farrell	the SFArtsED Board of Directors
Max Gustafson	JoAna Gray &
Jen Tait	42nd Street Moon
Jono Clay	Glen Park Elementary & Principal
Cow Hollow Catering – Diane Theodor- elos	Elizabeth Zarr
The staff of the Presidio Theatre	RASOTA & Interim Principal Stella Kim
Sharonjean and Richard Leeds	John Frisch & Leewood Press
Crankstart Foundation	Very special thanks to our Players
Dawn Redwoods Trust	Families for sharing their children and
Eva Gunther Foundation	lending their support



## **KEEP IN TOUCH**

[www.sfartsed.org](http://www.sfartsed.org) • [info@sfartsed.org](mailto:info@sfartsed.org)  
415.551.7990

# SFartsED season **55**

Special Thanks to our Season Sponsors



**Dodge & Cox®**



LAW OFFICES  
of  
R. Michael Lieberman



**SURFACEDESIGN INC**

**CATHARINE  
CLARK  
GALLERY**



piccino

**ANGLIM/TRIMBLE**

**BI-RITE**  
EAT GOOD FOOD

open  access

MÉTIER



**KK  
PROMOTIONS**



Join us as an SFartsED  
Season Sponsor